

MONTHLY MEMBERSHIP PROGRESS REPORT

LOCATION INDIA

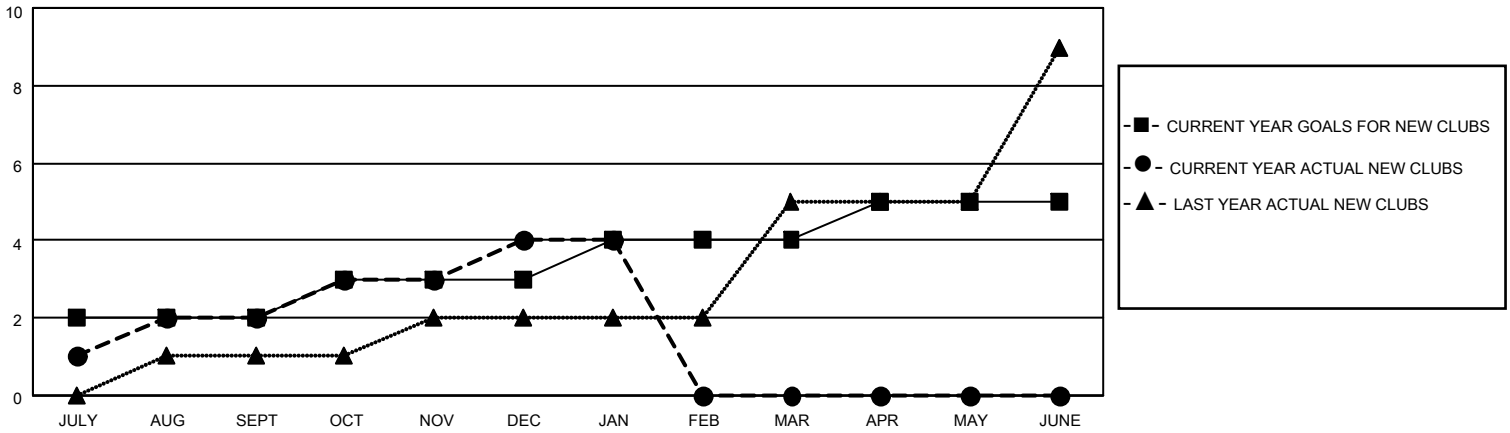
District 3234H1

Results as of: 1/31/2023

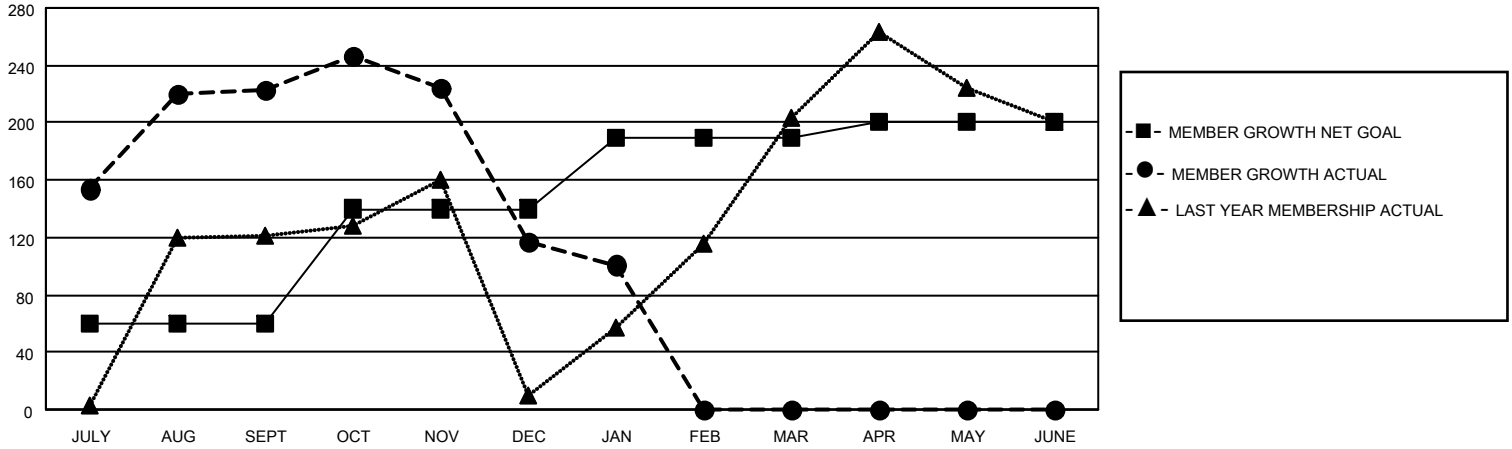
Clubs			
RESULTS FOR 2022-2023			
QUARTER	NEW CLUB GOAL	NEW CLUBS	DROPPED CLUBS
JULY/AUG/SEPT	2	2	0
OCT/NOV/DEC	1	2	3
JAN/FEB/MAR	1	0	0
APR/MAY/JUNE	1	0	0

Members			
RESULTS FOR 2022-2023			
QUARTER	MEMBER GROWTH NET GOAL	MEMBER GROWTH ACTUAL	DROPPED MEMBERS ACTUAL (including transfers)
JULY/AUG/SEPT	60	307	68
OCT/NOV/DEC	80	65	171
JAN/FEB/MAR	50	14	30
APR/MAY/JUNE	10	0	0

GOALS AND ACTUAL NEW CLUBS CUMULATIVE



GOALS AND ACTUAL MEMBERS CUMULATIVE



DROPPED CLUBS: 3

57 CLUBS OF 111 ADDED 1 OR MORE NEW MEMBERS

GENDER DISTRIBUTION

MALE	2,477 (59.22%)
FEMALE	1,706 (40.78%)
NON BINARY	0 (0.00%)
PREFER NOT TO ANSWER	0 (0.00%)

DROPPED MEMBERS

[CLICK HERE FOR CUMULATIVE MEMBERSHIP DATA](#)

DECEASED	4
CLUB CANCELLED	60
OTHER	205
TOTAL	269

TOTAL FAMILY UNIT MEMBERS 3,202

FAMILY MEMBERS PAYING HALF DUES 1,772